

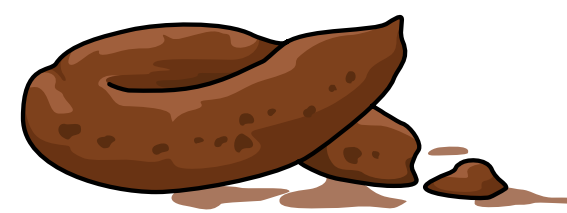
# Dog poop consistency

Excerpt from Symptoms to Watch for in Your Dog

## Nothing

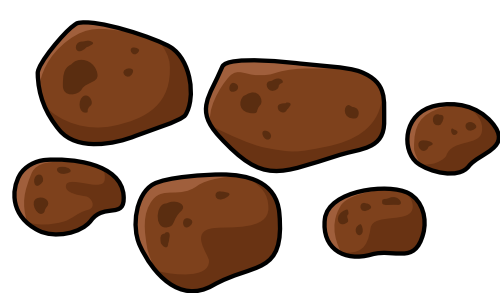
Lots of straining and hunching without producing any poop—your dog's putting in all the effort for zero results. Your dog could be constipated or have an obstruction. Severe diarrhea and colitis can cause similar symptoms. Watch for other red flags like lethargy, vomiting, abdominal pain, or if the straining lasts more than a day.

## Moist and soggy but still formed



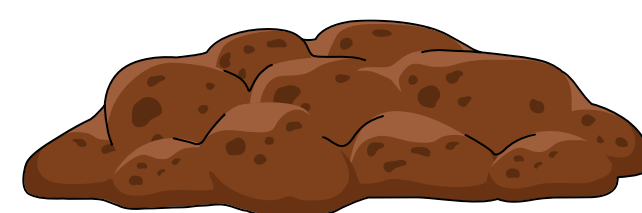
This kind of poop puts me in an alert mode. But JD and Cookie got these every now and then with the next poop being normal again. Something didn't sit right, but the body sorted it out. When Jasmine got these, it meant her IBD was starting to act up. A dog who has this type of stools consistently needs to see a vet.

## Small, dry, hard pellets



Constipation. A couple of times Cookie produced hard stools from eating too many bones and not enough vegetables. Things went back to normal with a correction in her diet. Constipation can have serious causes and effects. If Cookie had hard poops for more than one or two bowel movements and it didn't resolve with adjusting her food, I would take her to the vet.

## Moist and soggy losing shape



When this comes out of my dog's hind end, I see the warning signs and hope it's a fluke—sometimes it is. Think back what might be the culprit. Diet change? Too many treats? Did your dog help themselves to something? Watch out for other symptoms. Monitor following poops closely.

## Firm but not hard, dry logs that look segmented



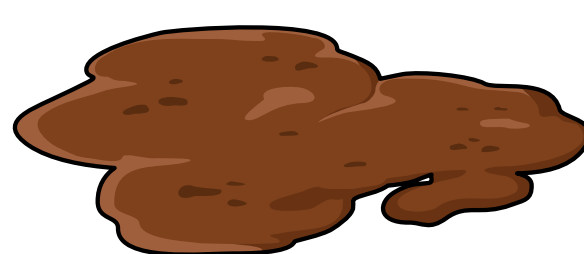
That's good poop in my books. With Jasmine, every time she had a poop like that was cause for celebration. This is the ideal dog poop consistency—think of it as log-shaped, segmented like a sausage, and firm enough to hold its form when picked up, but not so hard it crumbles or so soft it loses shape.

## Pudding; poop that loses form once it hits the ground. Some texture but no shape.



This gut isn't happy. When it continues for more than one or two bowel movements, it's time to do something. Could mean intestinal parasites, such as Giardia, intestinal infections (bacterial, viral or fungal), immune/inflammatory disorders, metabolic diseases (e.g., liver failure), heart disease, cancer, and more.

## Watery



The gut is really unhappy. When Jasmine got these, her gut was in trouble. Large volumes of watery diarrhea, with or without blood in it, can be an emergency, particularly in smaller dogs and puppies.